

Community Focus Group

November 9, 2017

Alexandria Monroe High School

Welcome!

As you enter...

- Choose any open table
- Complete the Participation Information and Contact sheet

Purpose of Tonight's Focus Group

- To provide important information about Alexandria Community School Corporation
- To describe school district's current needs and financial status
- To gather community member input regarding possible school reconfiguration
- To gather feedback on various options for next steps

Our Promise

- We are here to share information and to listen.
- We will publish your feedback on our website:
<http://alexandriacsc.alex.k12.in.us/>

****Please write your questions, comments, or concerns on post it notes as we progress through the meeting.**

Before We Get Started

- Please introduce yourself to everyone at your table.
- Please complete the Participation Information and Contact form.

Mission Statement

Alexandria Community School Corporation prepares students to positively contribute to the local and global community by fostering curiosity, thinking critically, acquiring knowledge, and communicating effectively through a variety of curricular and extracurricular experiences.

We live our mission by:

- Recognizing and affirming the unique and intrinsic worth of each individual child.
- Modeling and developing persistence, optimism, and curiosity.
- Treating all those we serve with compassion and kindness.
- Acting with honesty and integrity.
- Trusting our colleagues, parents, students, and community as valuable members of our team.

Alexandria Community School

Successes

- 2016-17 Graduation Rate - 95.7%
- Girls Volleyball – Semi State Qualifier / 4 Seniors were All Academic All State – Scholars and Athletes!
- 2015 Alexandria Monroe High School ranked 23rd by US News and World Report as a Top High School. (Silver Medal)
- IU Honors Program in Foreign Language – 5 Students recognized. (Most ever)
- 3 First Place Winners – Arts Association of Madison County
- 30 Gold Medalists at State Music Association Competition
- Tiger Band – 2016-17 and 2017-18 Semi-State Qualifiers
- Band was an All Music Award winner
- High school spell bowl placed 1st in 3A
- Bowling Team – State qualifiers
- Multiple athletes recognized as all state or academic all state.

Alexandria Community Schools

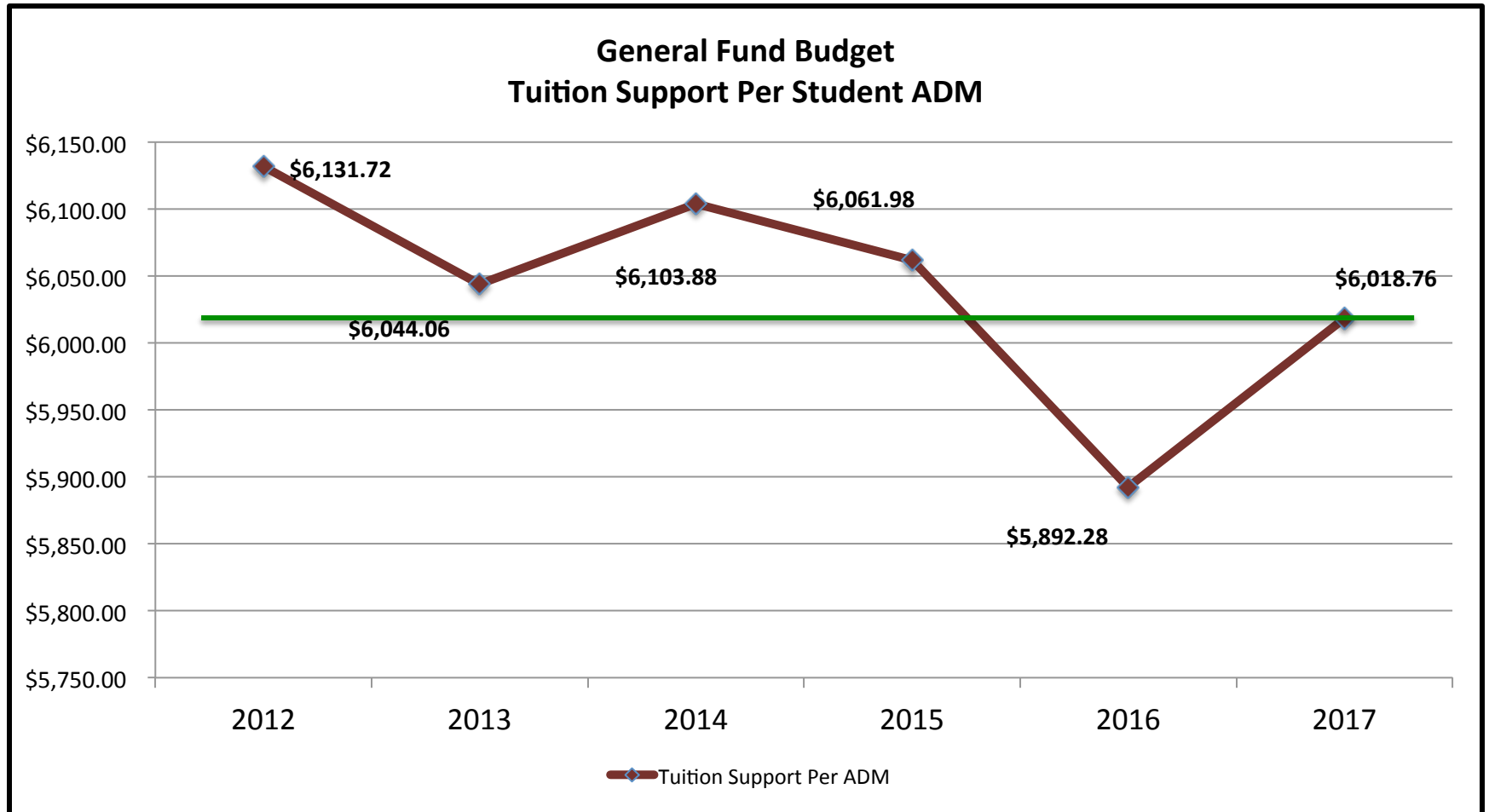
Concerns

- Academic programming does not support the needs of all students, especially those students wanting to pursue a trade.
 - Students need more program opportunities that allow for authentic learning to prepare them for the 3 Es (Enlist, Enroll, Employ)
 - Our schools function as three separate buildings, leading to little curriculum alignment.
- Alexandria Community School Corporation has overspent the General Fund by several hundred thousand dollars almost every year for at least the past five years.
 - Over the two year period between Jan. 2014 and – Dec. 2016, the district overspent the General Fund by about 1 million dollars.
 - The General Fund cash balance is quickly dwindling.
- Our facilities, while structurally sound, have several issues (mechanical, safety, structural, and academic) that need to be addressed costing approximately 8 million dollars.
 - Our facilities are inefficient and expensive to operate
 - Our facilities have numerous issues that need to be addressed

A Little History

- 2009 the State of Indiana significantly reduced funding to all schools due to Great Recession
 - Changed how the General Fund was funded.
 - General Fund now comes from state sales tax, not property tax
- Tax Cap Loss: ACSC has lost over 1 million dollars since 2009
 - This impacts the capital project fund (used to maintain facilities)
- 2013-14 State switched to two ADM counts, significantly impacting general fund revenue
 - ADM (How schools count enrollment number of students)
 - Alex loses a significant number of students between the two count dates. This negatively impacts general fund dollars received from state.

General Fund Tuition Support Per Student



Enrollment and Demographic Shifts

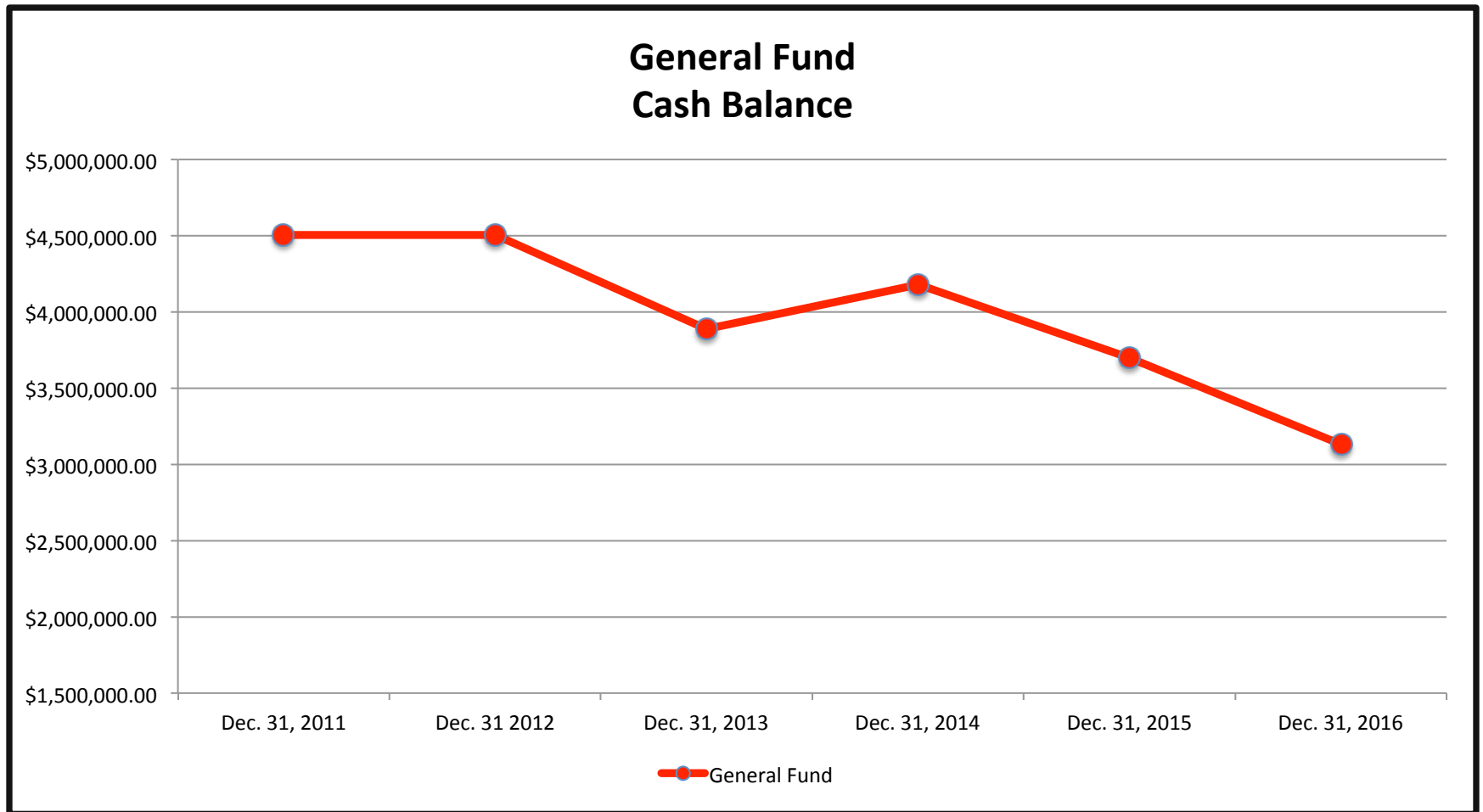
	2005-06	2006-07		2014-15	2015-16	2016-17	2017-18
Enrollment	1658	1629		1582	1498	1561	1508
Free/ Reduced Percent	38.5%	39.3%		53.2%	49.1%	51.1%	51%
Special Education	11.2%	12.4%		13.8%	15.5%	16.7%	*Dec. 1

Less students = Less money received from the State to support the General Fund.

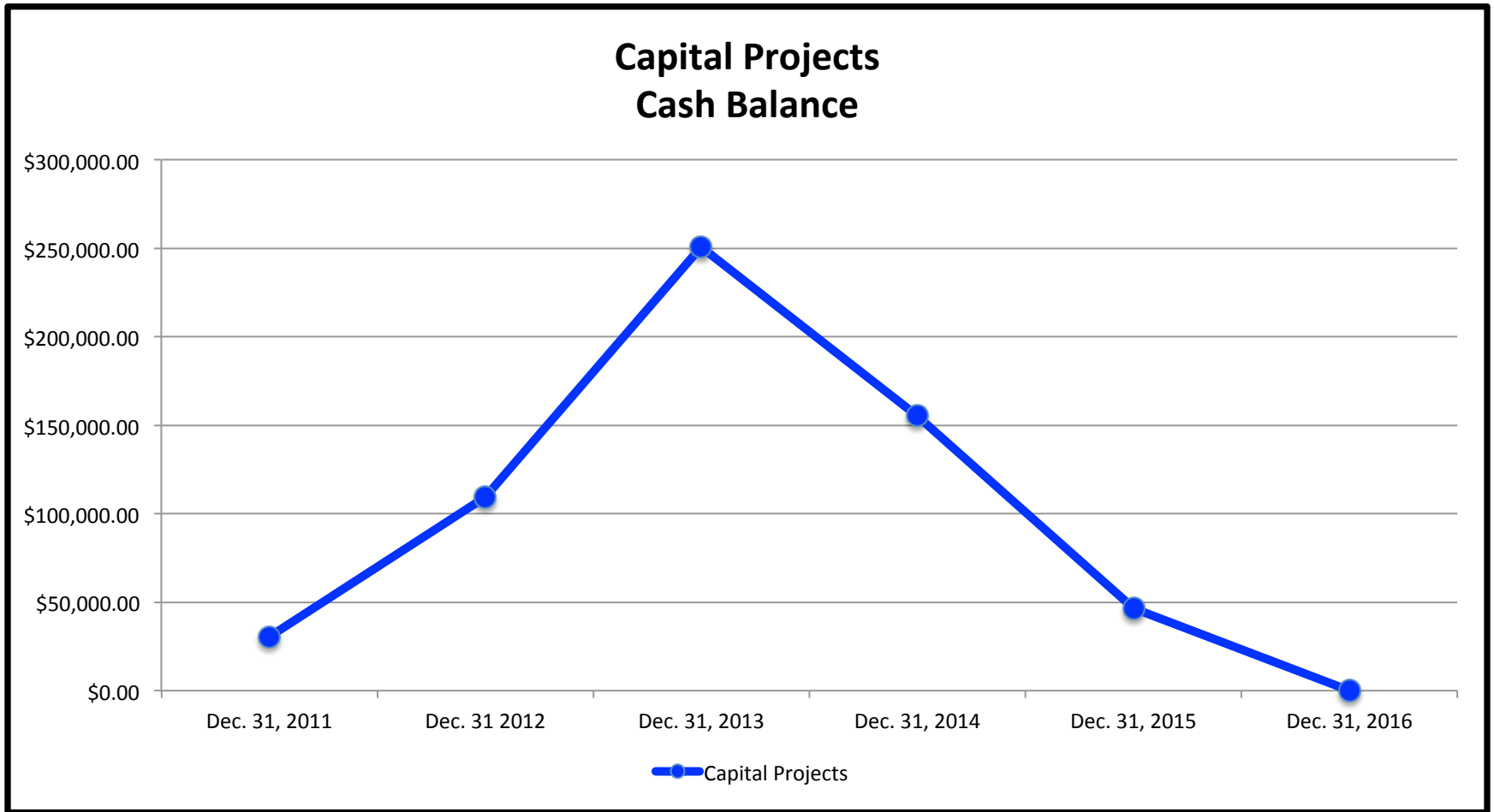
However, more students qualify for Free and Reduced Lunch and more students qualify for Special Education services.

Less students , but those enrolled have great academic and social/emotional needs.

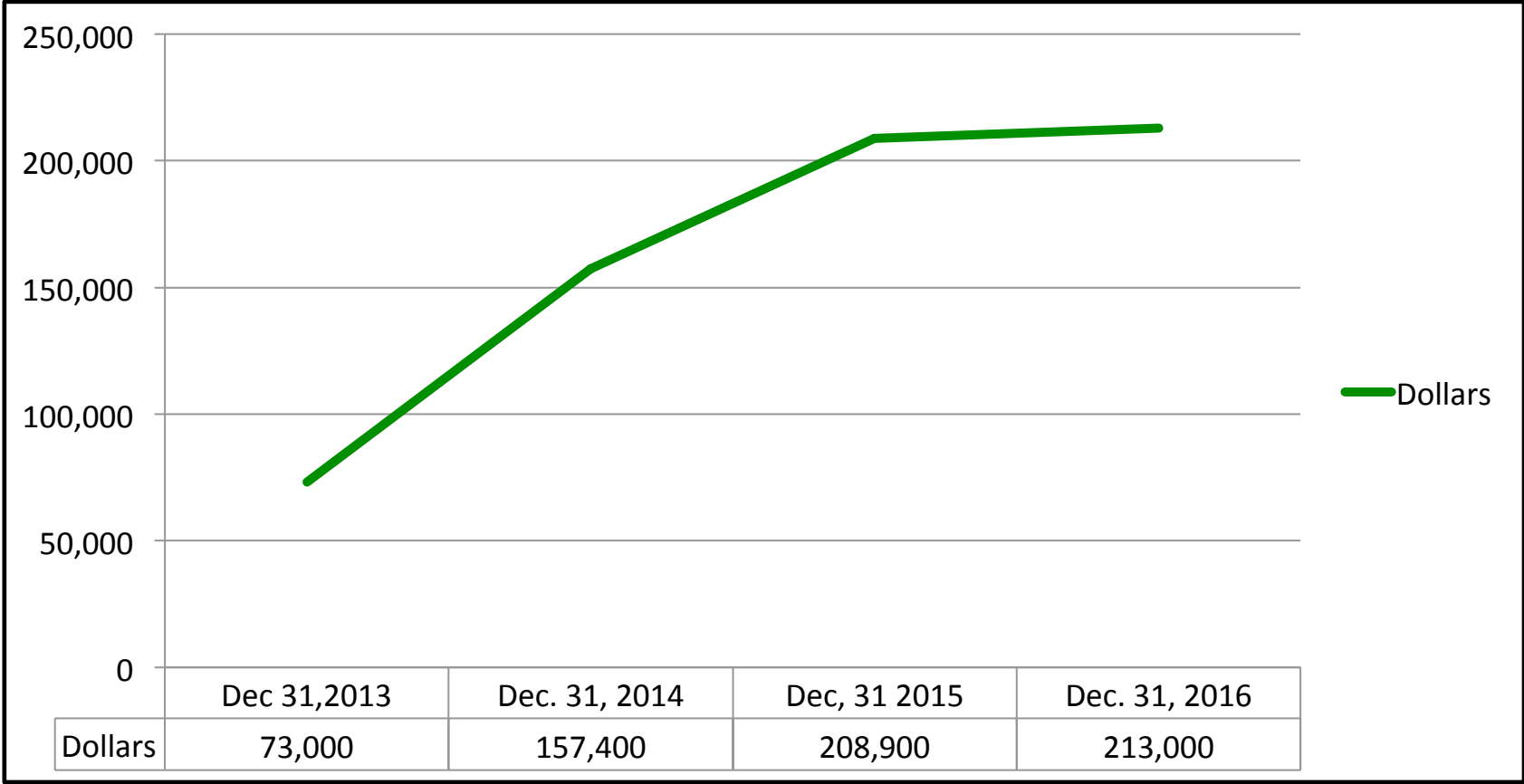
General Fund Cash Balance Trend



Capital Project Cash Balance



General Fund Dollars Used to Support Capital Project Funds



The district continues to support the Capital Project Fund with money from the General Fund. Over the last two years, the district has spent over \$200,000 each year to take care of facility issues because the Capital Projects Fund has run out of money.

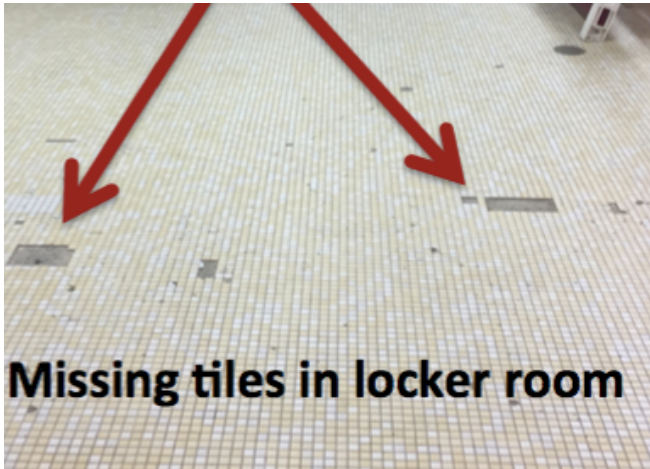
Demographic Study Results

- Total district enrollment is forecasted to decrease by 47 students, or -3.0%, between 2016-17 and 2021-22.
- Total enrollment will decline by 39 students, or -2.6%, from 2021-22 to 2026-27.
- The local 18-to-24 year old population continues to leave the district, going to college or moving to other urbanized areas. This population group accounts for the largest segment of the district's out migration flow

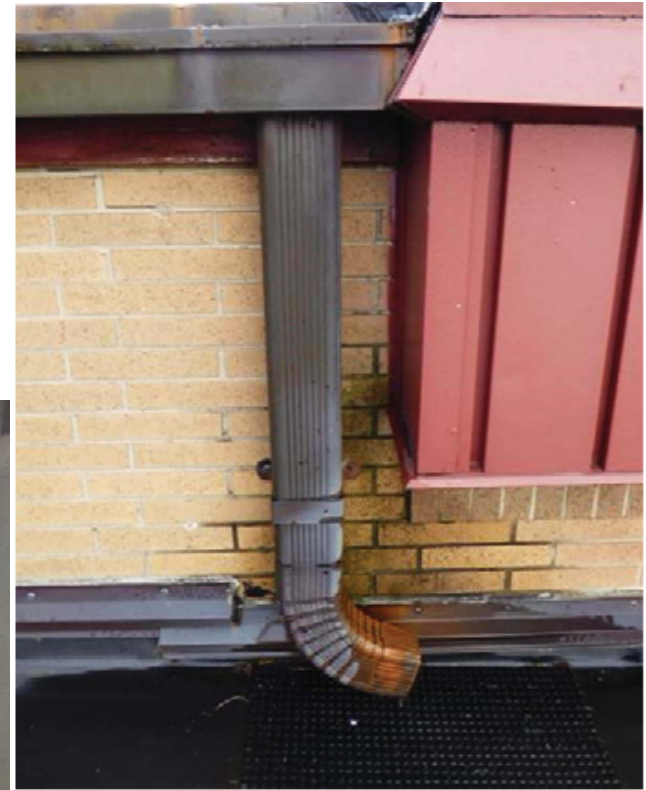
Facility Audit Results... What We Learned...

- Our buildings, while structurally sound have significant repairs that need to be addressed soon.
- The high school and intermediate school are inefficient – Energy Star Rating of 43 (75 is target for efficiency)
- Recommended Repairs from the facility audit would cost approximately 8 million dollars

Facility Concerns



Standing water on the floor where
main electrical transformer is
located

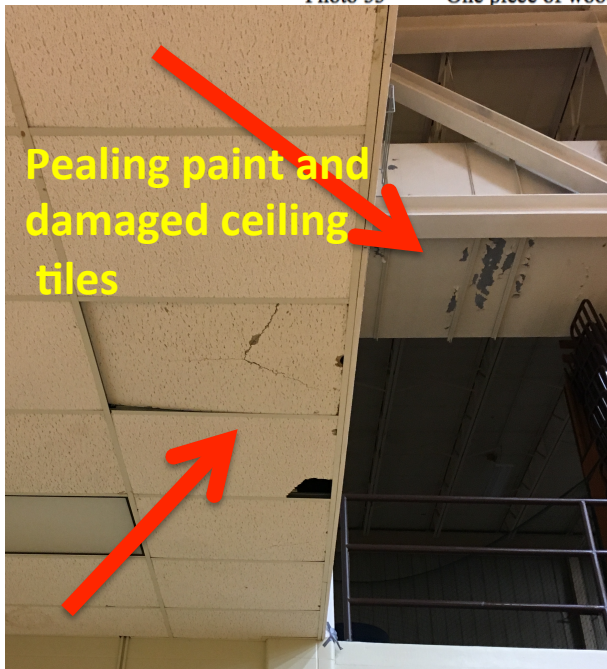


Facility Concerns Continued

A board is falling out from behind the siding.



Photo 55 One piece of wood trim was loose...



Peeling paint and damaged ceiling tiles



Photo 20 Peeling paint has left the metal exposed allowing it to corrode.

Option 1: Do Nothing New

Pro

- No tax increase

Con

- General Fund expenditures continues to exceed revenue resulting in deficit spending.
- Staff reductions necessary to address General Fund shortfall
- Buildings continue to erode
- Programming reductions due to lack of funds and personnel

Option 2: Fix Current Buildings

Pros

- Current facilities issues are addressed and fixed.

Cons

- Old buildings continue to be maintained and are still inefficient
- No curriculum program expansion
- Staff reductions necessary to address General Fund shortfall
- Tax increase

Option 3: Add K-2 Wing to Intermediate & Do Some High School Renovation

Pro

- Addresses General Fund and Capital Project Fund expenditure issues
- Allows for curriculum expansion at the high school – Project Lead the Way (STEM) / Ag
- Allows for curriculum coherence at elementary and intermediate school
- Title I services can be expanded to at least 3rd grade
- Update facilities and improve safety
- Gain efficiencies in transportation, energy, and maintenance

Con

- Find new use for Alexandria Elementary School (Marie Thurston)
- Reduce staff (*however, most can be done through attrition*)
- Tax increase to tax payers to pay for \$19 million dollar project
- Continue to maintain the intermediate building which is inefficient

Option 4: Build a New Pre K-6 Elementary School

Pro

- Addresses General Fund and Capital Project Fund expenditure issues
- Allows for curriculum coherence at elementary and intermediate school
- Possible high school program expansion where space allows
- Title I services can be expanded to at least 3rd grade
- Update K-6 facilities and improve safety
- Gain efficiencies in transportation, energy, and maintenance

Con

- Find new use for Alexandria Elementary School (Marie Thurston)
- Reduce staff (*however, most can be done through attrition*)
- Tax increase to tax payers to pay for \$25 million dollar project
- High School renovation and maintenance issues remain